



THE FIRST LOCATION AT THE FIRST ADDRESS *in Yerevan*

MONUMENT
PREMIUM HOUSES



Premium houses in Yerevan's #1 area, right in front of the Victory Park, where a wonderful view of the city opens up in all seasons of the year.

Location uniqueness, taste in design and everyday convenience make the houses exceedingly desirable for the future residents.

9 PRIVATE HOUSES

MODERN DESIGN

GREEN AREA

24-HOUR SECURITY

NIGHT LIGHTING

PARKING

HIGH QUALITY
CONSTRUCTION MATERIALS





BEST VIEWS

The view opening up from the houses to Mount Ararat, Victory Park and Yerevan overall, with colorful sunrises and pink sunsets, will fill your day with inspiration and beauty in all situations.



ELEVATOR



TERRACE



GREEN AREA



SECURED AREA



5 FLOORS



SEMI-BASEMENT



MODERN DESIGN

BLOCK A

ONLY 4 PRIVATE HOUSES

Each house has a total area of 350 square meters, comprised of five floors, the lower floor being semi-basement, and the top floor being a terrace.

The modern style and solutions give enough area and opportunity to implement any idea related with interior.



MONUMENT

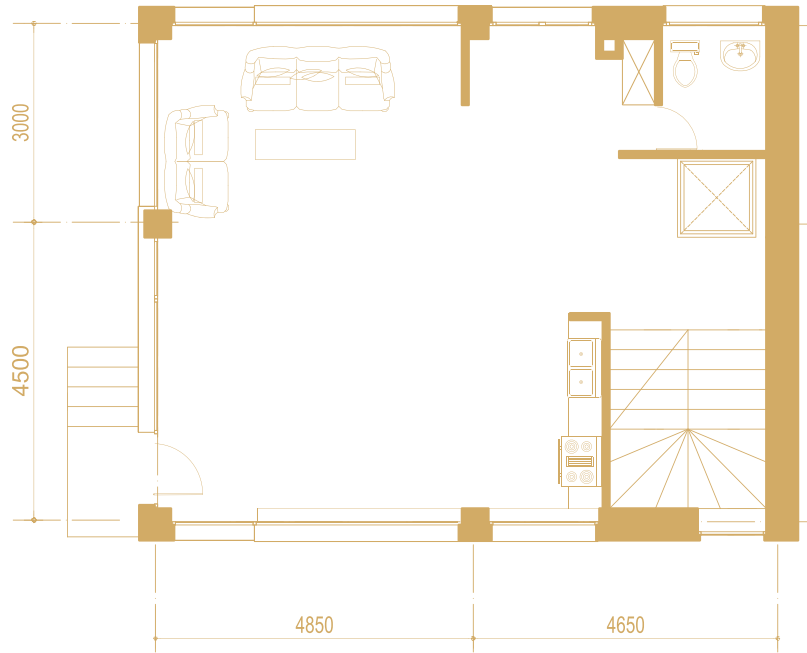
PREMIUM HOUSES



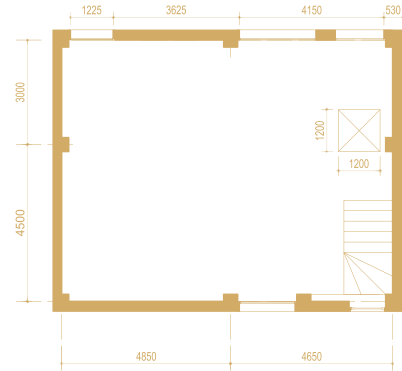
Every house has its own separated private land and green area around itself, with beautiful and permanently-maintained flowers.



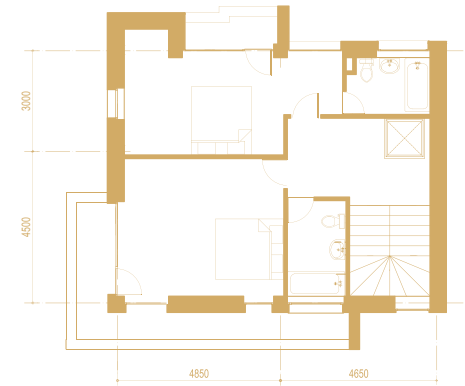
BLOCK A - PRIVATE HOUSE BLUEPRINT



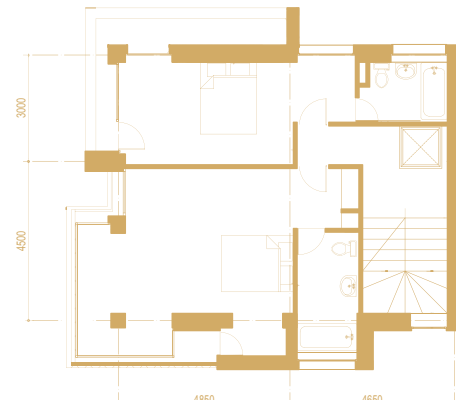
FIRST FLOOR



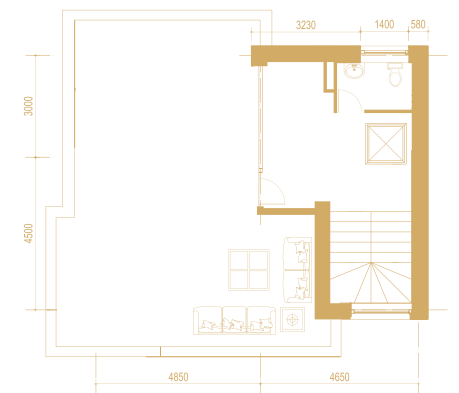
SEMI-BASEMENT



SECOND FLOOR



THIRD FLOOR



TERRACE



The modern and stylish structure of the houses give the buyer a special flexibility to design and finalize the arrangement and the appearance of the rooms in their own style, allowing a fully individual approach.

The built-in elevator will give extra comfort and accessibility to the many floors of the house. The views the large windows provide, and the incoming light create a joyful atmosphere.

BLOCK B

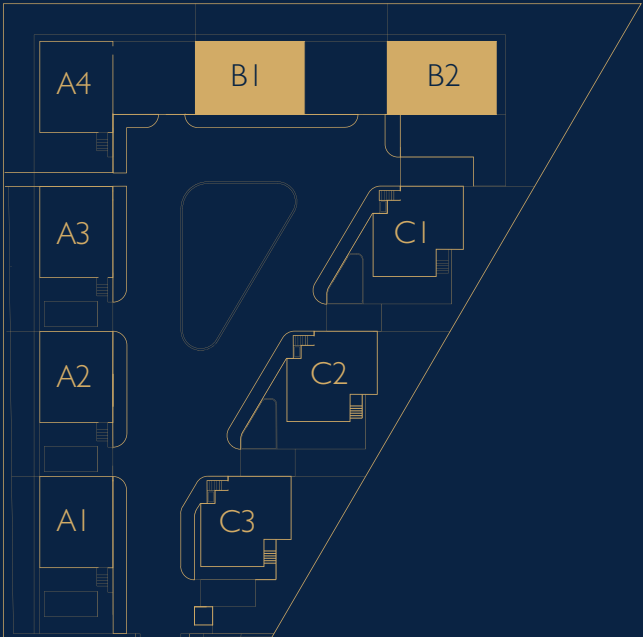
ONLY 2 PRIVATE HOUSES

Each house has a total area of 405 square meters, comprised of five floors, the lower floor being semi-basement, and the top floor being a terrace.

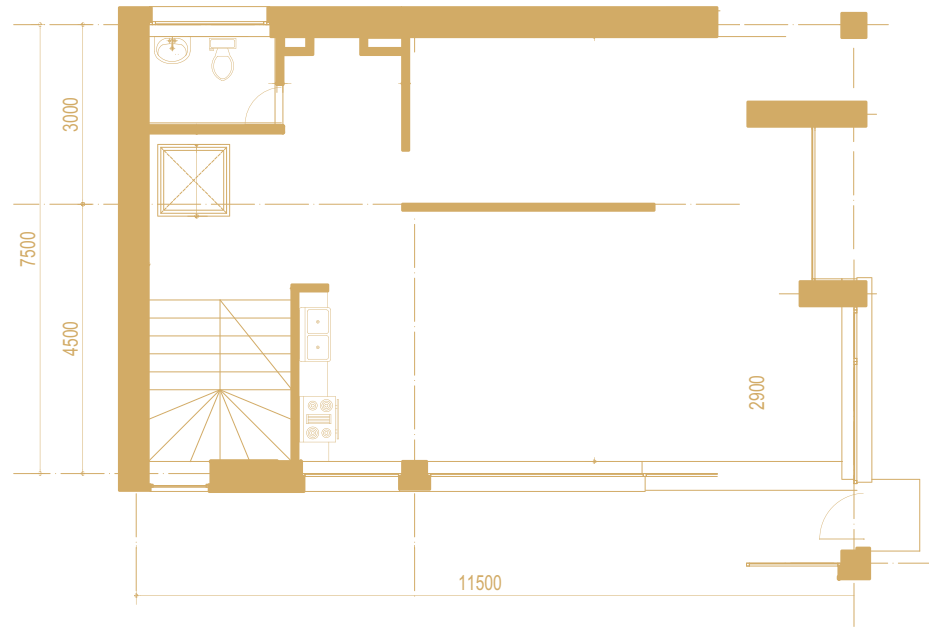


MONUMENT

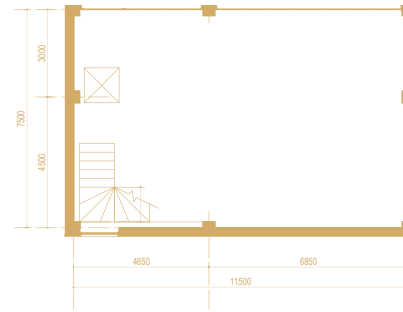
PREMIUM HOUSES



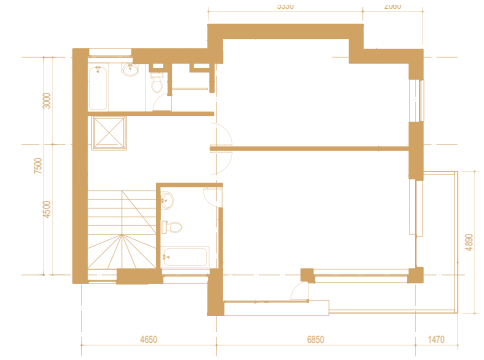
BLOCK B - PRIVATE HOUSE BLUEPRINT



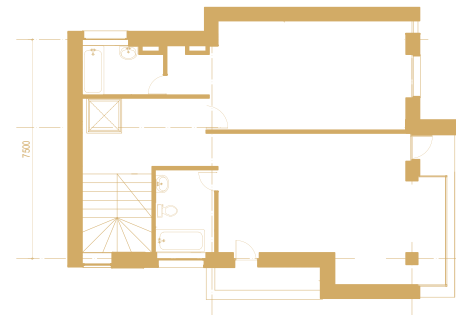
FIRST FLOOR



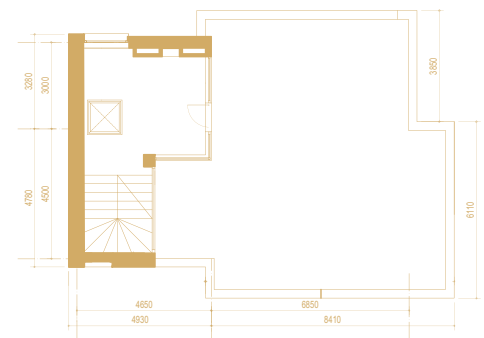
SEMI-BASEMENT



SECOND FLOOR



THIRD FLOOR



TERRACE



The open air terrace area is an open space, looking at the city and Mount Ararat, while still being separated from the neighboring houses, making it an amazing place for parties, as well as for relaxing and doing creative work.

BLOCK C

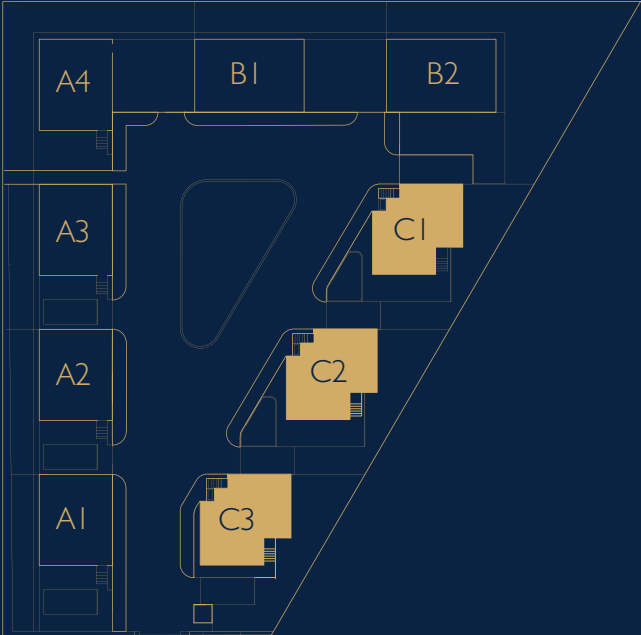
ONLY 3 PRIVATE HOUSES

Each house has a total area of 324 square meters, comprised of five floors, the lower floor being semi-basement, and the top floor being a terrace.

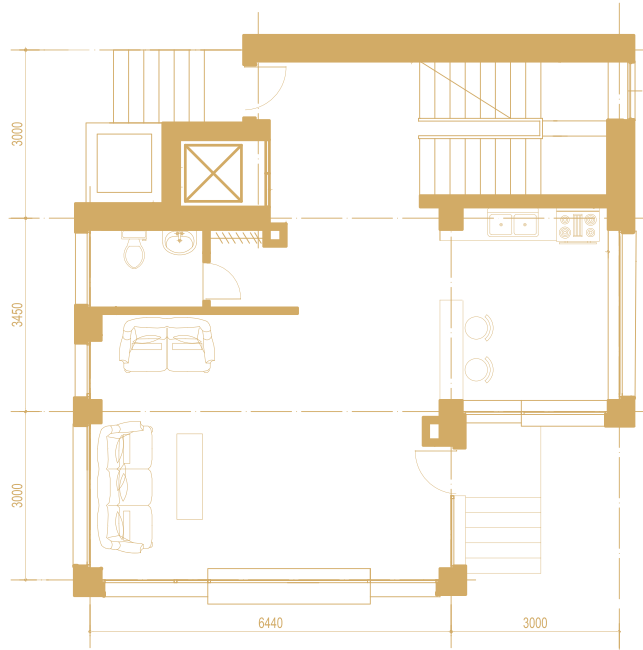


MONUMENT

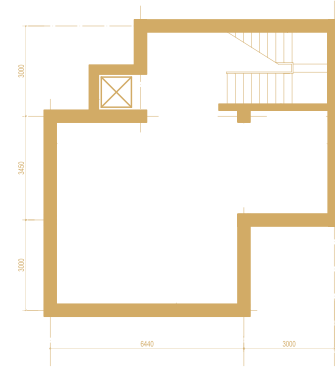
PREMIUM HOUSES



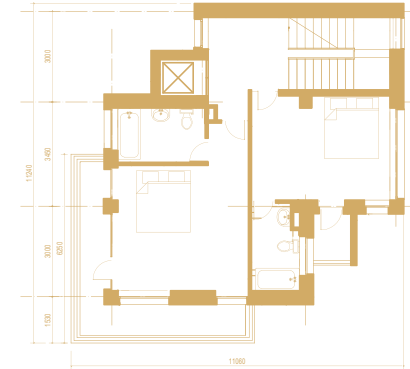
BLOCK C - PRIVATE HOUSE BLUEPRINT



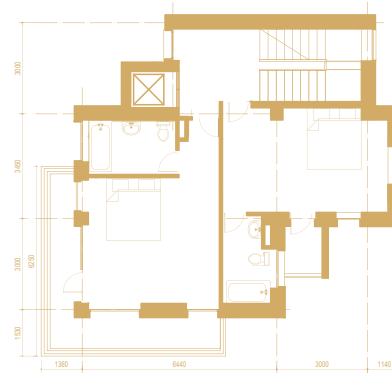
FIRST FLOOR



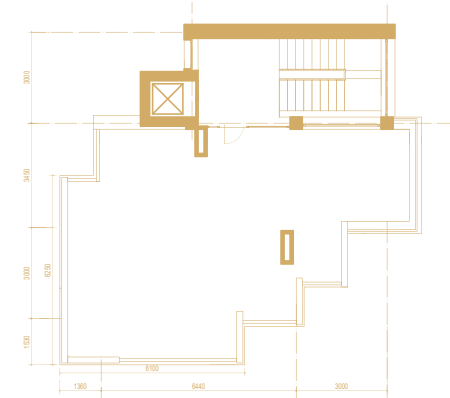
SEMI-BASEMENT



SECOND FLOOR



THIRD FLOOR



TERRACE



The 900 square meter garden, equipped with children's playground, walking alleys, permanently-maintained flowers and trees, in the very heart of the city, is a great place for getting cut away from the city and being in nature.



The house interior can fully be adapted and customized to the buyer's style and taste; upon desire our high-standard interior designers can invest their many years' international experience to implement your requests.

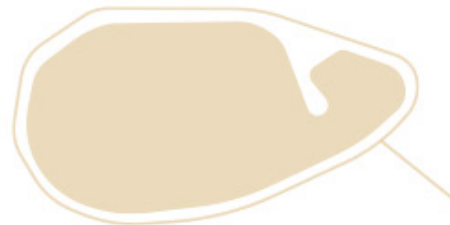
MONUMENT

PREMIUM HOUSES

NORTHERN RAY



AZATUTYAN AVE



VICTORY PARK

MEMORIAL



SARALANJI ST

CASCADE COMPLEX



THE BEST PRIVATE PREMIUM HOUSES

FOR RENT

We offer the best private houses in the first place,
at the first address of Yerevan.

ARMENIA, YEREVAN
1 AZATUTUTYAN ST.

+374 99 000 336
+374 44 63 90 30

info@monument.am
www.monument.am